



SUSTAINABLY YOURS

S O L A R A E S T A T E

558-574 ETIWANDA AVENUE, MILDURA
VICTORIA, 3500

Discover prime, vacant land parcels tailored for your dream house and land packages, nestled within a prestigious 55+ lot residential community.

Discover



Two minute drive

Just a quick 2-minute drive to the major shopping centre "Centro" and the famous Murray River and just 5 minutes from the vibrant CBD and the serene shores of the Lake Hawthorn.

Solara Estate

558-574 ETIWANDA AVENUE,
MILDURA

The name itself invokes a sense of elegance, grandeur and exclusivity making it an ideal choice for a residential subdivision. We invite you to explore the defining characteristics that encapsulate the essence of Solara Estate.

Solara Estate embodies the concept of luxury. From the moment one enters this exclusive enclave, an aura of opulence prevails.

The architecture of the homes exudes sophistication, utilising cutting-edge design principles and incorporating high-end materials. Each residence is meticulously crafted to offer the utmost in comfort, style, and functionality. From spacious living areas to state-of-the-art appliances, every detail is carefully considered to enhance the residents' quality of life.

Solara Estate epitomises a strong sense of community. The subdivision is designed to foster connections amongst its residents while encouraging a vibrant and neighbourly environment. Thoughtfully landscaped communal spaces, such as parks, green spaces, and walking trails offer avenues for interaction, ensuring that friendships are formed

AND A STRONG SENSE
OF BELONGING IS
NURTURED.

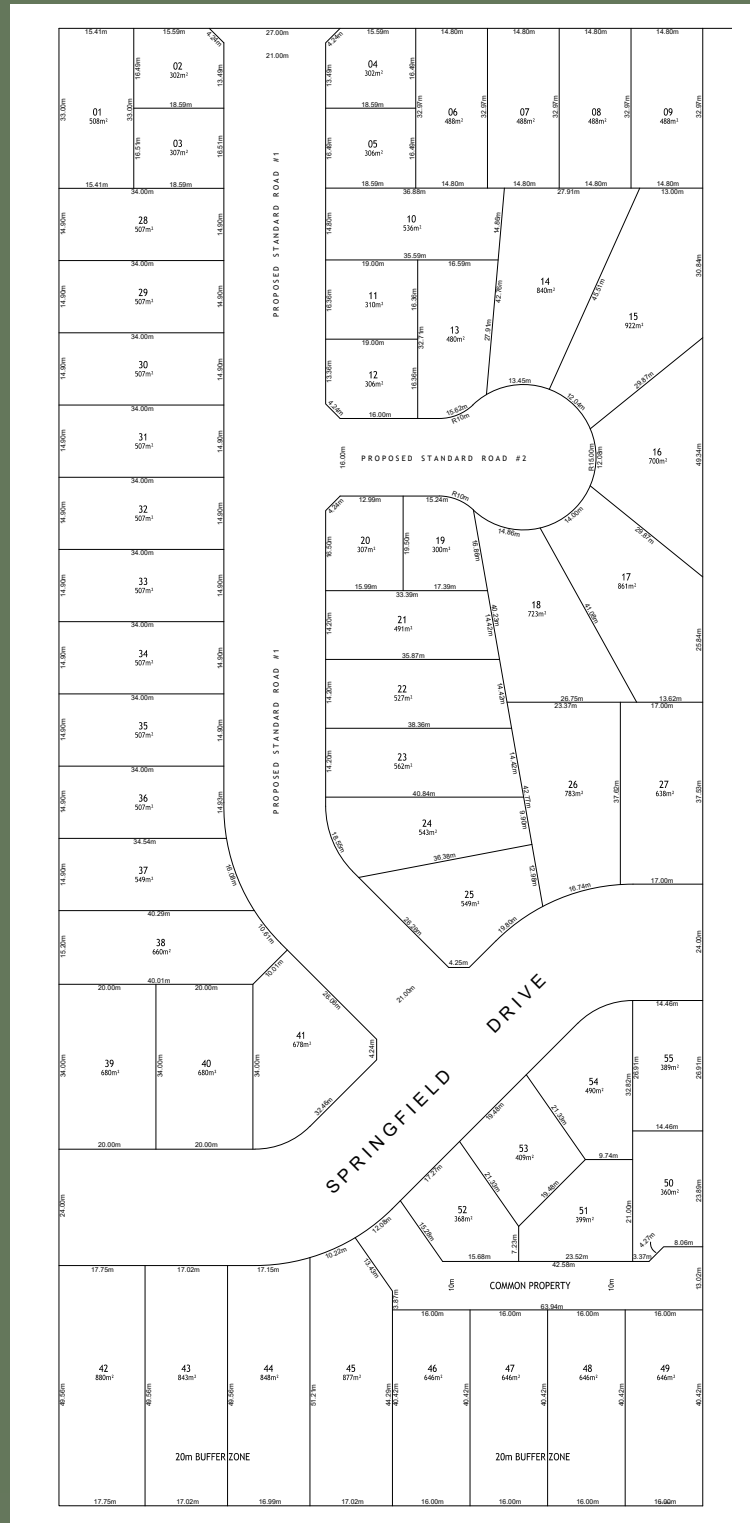


Explore

A photograph of a river scene at dusk or dawn. Large, mature trees with dense foliage line the banks, their forms reflected in the calm water. Several swans are visible on the river, and a single bird is captured in flight against the sky. The lighting is soft and golden, creating a peaceful atmosphere.

Find a secluded spot beside the river, watch the sunset and then wait for the magical star show to begin. Get up the next morning and watch the sunrise Mallee style. The Mildura region has all the ingredients for the perfect blend of modern living and natural beauty.

A VIBRANT REGIONAL CITY FULL OF CONTRAST, FROM THE MURRAY RIVER TO THE OUTBACK, THERE IS SOMETHING FOR EVERYONE.



GET TO KNOW
THE AREA

A woman with long dark hair, wearing a white t-shirt with a red and blue graphic, is crouching outdoors. She is smiling and looking down at a lemon she is holding in her right hand. Her left hand is open and held out in front of her. The background is a lush green garden with various plants and trees.

Commitment to sustainable living

This subdivision exemplifies a dedication to reducing its carbon footprint. Residents can enjoy the privilege of residing in a community that incorporates eco-friendly practices into its design and construction.

Price List

As at September 2024

LOT	M2	PRICE		LOT	M2	PRICE
1	508	\$178,000		29	507	\$178,000
2	302	\$158,000		30	507	\$178,000
3	307	\$158,000		31	507	\$178,000
4	302	\$158,000		32	507	\$178,000
5	306	\$158,000		33	507	\$178,000
6	488	\$175,000		34	507	\$178,000
7	488	\$175,000		35	507	\$178,000
8	488	\$175,000		36	507	\$180,000
9	488	\$175,000		37	549	\$180,000
10	536	\$180,000		38	660	\$210,000
11	310	\$158,000		39	680	\$200,000
12	306	\$158,000		40	680	\$200,000
13	480	\$175,000		41	678	\$200,000
14	840	\$240,000		42	880	\$240,000
15	922	\$245,000		43	843	\$240,000
16	700	\$200,000		44	848	\$240,000
17	861	\$240,000		45	877	\$240,000
18	723	\$210,000		46	646	\$200,000
19	300	\$145,000		47	646	\$200,000
20	307	\$145,000		48	646	\$200,000
21	491	\$175,000		49	646	\$200,000
22	527	\$178,000		50	360	\$145,000
23	562	\$180,000		51	399	\$158,000
24	543	\$180,000		52	368	\$158,000
25	549	\$180,000		53	409	\$165,000
26	783	\$230,000		54	490	\$175,000
27	638	\$200,000		55	389	\$158,000
28	507	\$178,000				



REGISTER YOUR INTEREST TODAY

info@nationlinkproperty.com.au

nationlinkproperty.com.au

558-574 ETIWANDA AVENUE, MILDURA
VICTORIA, 3500